

## FEATURES AND SPECIFICATIONS

### Features and Benefits

- Sizes 4 to 54 circuits
- End-to-end and side-to-side stackable for dual row connections to a 2.54mm (.100") pitch grid pin field

### Reference Information

Product Specification: PS-70058

Packaging: Bag

UL File No.: E29179

CSA File No.: LR19980

Mates With: 8624, 8723, 8724, 70029, 70203, 70204, 70227, 70260, 70280, 70287, 70567, 70568, 71308 and 71349 Molex dual row headers

Use With: 70058 and 71851 crimp terminals

Designed In: Inches

### Physical

Housing: Black glass-filled polyester, UL 94V-0

Operating Temperature: -40 to +105°C



# 2.54mm (.100") Pitch

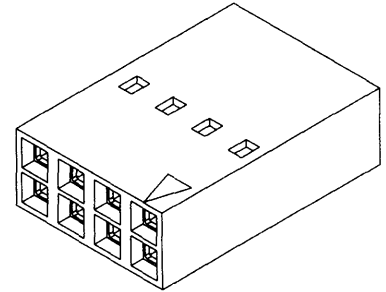
## SL™

## Crimp Housing

### 70450

### Dual Row

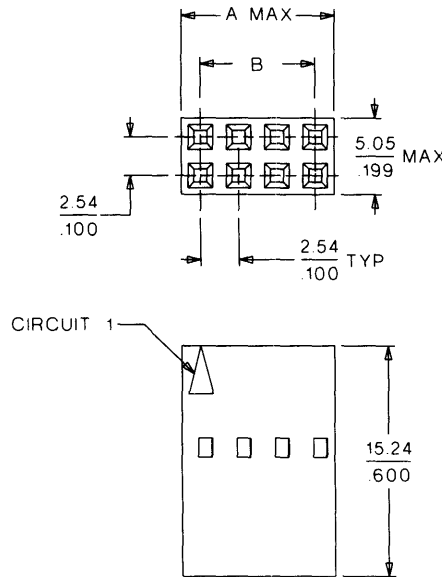
### Version A, Nonpolarized



2.54mm (.100") Pitch

**Not For Use With C-Grid III™ Components**

## CATALOG DRAWING (FOR REFERENCE ONLY)



Delivered on a carrier with 20 pieces per strip.

Actual Size



Universal Polarizing Pin  
40713-1

Order No. 15-04-0292

## ORDERING INFORMATION AND DIMENSIONS

Circuits	Order No.	Dimension	
		A	B
4	• 22-55-2041	5.05 (.199)	2.54 (.100)
6	• 22-55-2061	7.59 (.299)	5.08 (.200)
8	• 22-55-2081	10.13 (.399)	7.62 (.300)
10	• 22-55-2101	12.67 (.499)	10.16 (.400)
12	• 22-55-2121	15.21 (.599)	12.70 (.500)
14	• 22-55-2141	17.75 (.699)	15.24 (.600)
16	• 22-55-2161	20.29 (.799)	17.78 (.700)
18	• 22-55-2181	22.83 (.899)	20.32 (.800)
20	• 22-55-2201	25.37 (.999)	22.86 (.900)
22	• 22-55-2221	27.91 (1.099)	25.40 (1.000)
24	• 22-55-2241	30.45 (1.199)	27.94 (1.100)
26	• 22-55-2261	32.99 (1.299)	30.48 (1.200)
28	• 22-55-2281	35.53 (1.399)	33.02 (1.300)

Circuits	Order No.	Dimension	
		A	B
30	• 22-55-2301	38.07 (1.499)	35.56 (1.400)
32	• 22-55-2321	40.61 (1.599)	38.10 (1.500)
34	• 22-55-2341	43.15 (1.699)	40.64 (1.600)
36	• 22-55-2361	45.69 (1.799)	43.18 (1.700)
38	• 22-55-2381	48.23 (1.899)	45.72 (1.800)
40	• 22-55-2401	50.77 (1.999)	48.26 (1.900)
42	• 22-55-2421	53.31 (2.099)	50.80 (2.000)
44	• 22-55-2441	55.85 (2.199)	53.34 (2.100)
46	• 22-55-2461	58.39 (2.299)	55.88 (2.200)
48	• 22-55-2481	60.93 (2.399)	58.42 (2.300)
50	• 22-55-2501	63.47 (2.499)	60.96 (2.400)
52	• 22-55-2521	66.01 (2.599)	63.50 (2.500)
54	• 22-55-2541	68.55 (2.699)	66.04 (2.600)

• US Standard Product, available through Molex franchised distributors